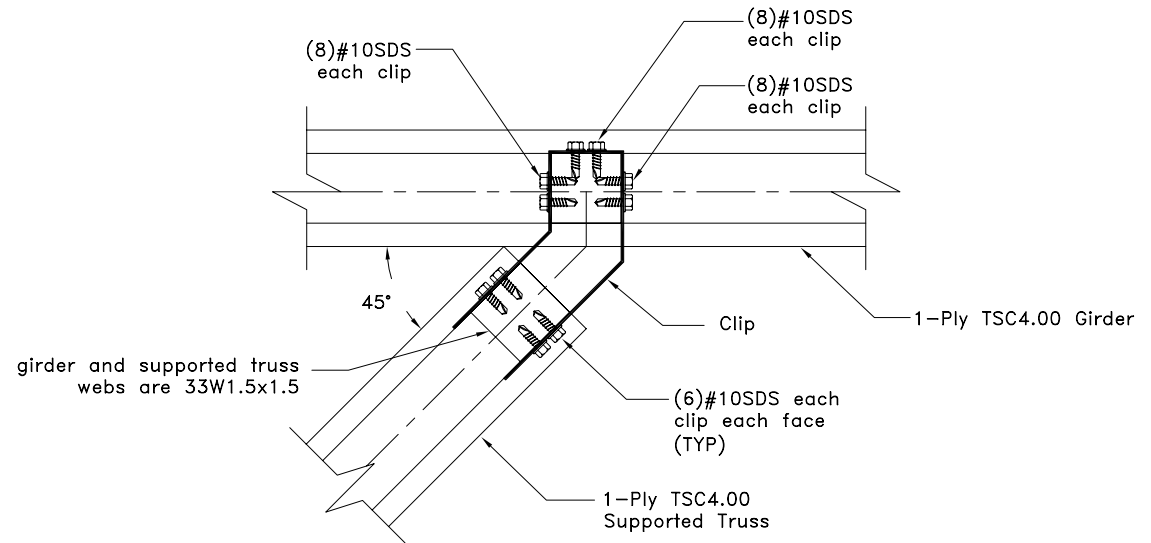


General Clip Information

16g ASTM A653 SS Grade 50 Class 1 G60
Bare metal thickness = 0.0538" (1.72mm)



$$R_v = R_{v1} + R_{v2}$$

$$U = U_1 + U_2$$

$$R_v = U = 3300 \text{ lbs}$$

General Notes:

1. SDS = Self-Drilling Tapping Screw
2. #10SDS edge distance, end distance and spacing are 9/16" minimum.
3. This connection is intended to resist vertical load only.
4. Cold-Formed Steel Calculations are per the 2004 addendum to the 2001 AISI North American Specification for Cold-formed Steel Structural Members.



www.TrusSteel.com

Florida: 1950 Marley Drive / Haines City, FL 33844 / (800) 755-6001
Missouri: 13389 Lakefront Drive / Earth City, MO 63045 / (800) 326-4102
California: 8351 Rovana Circle / Sacramento, CA 95828 / (800) 877-3678

45° Truss to Truss Connection for 1-Ply Supported Truss to 1-Ply Girder

ITW Building Components Group, Inc. shall not be responsible for any performance failure in a connection due to a deviation from this detail. Any variation from this detail shall be approved in advance by ITW Building Components Group, Inc.

Custom Detail:

TS-CD-TT-4506-002

Date:

2/25/09

Custom Detail Category:

Truss-to-Truss Connection