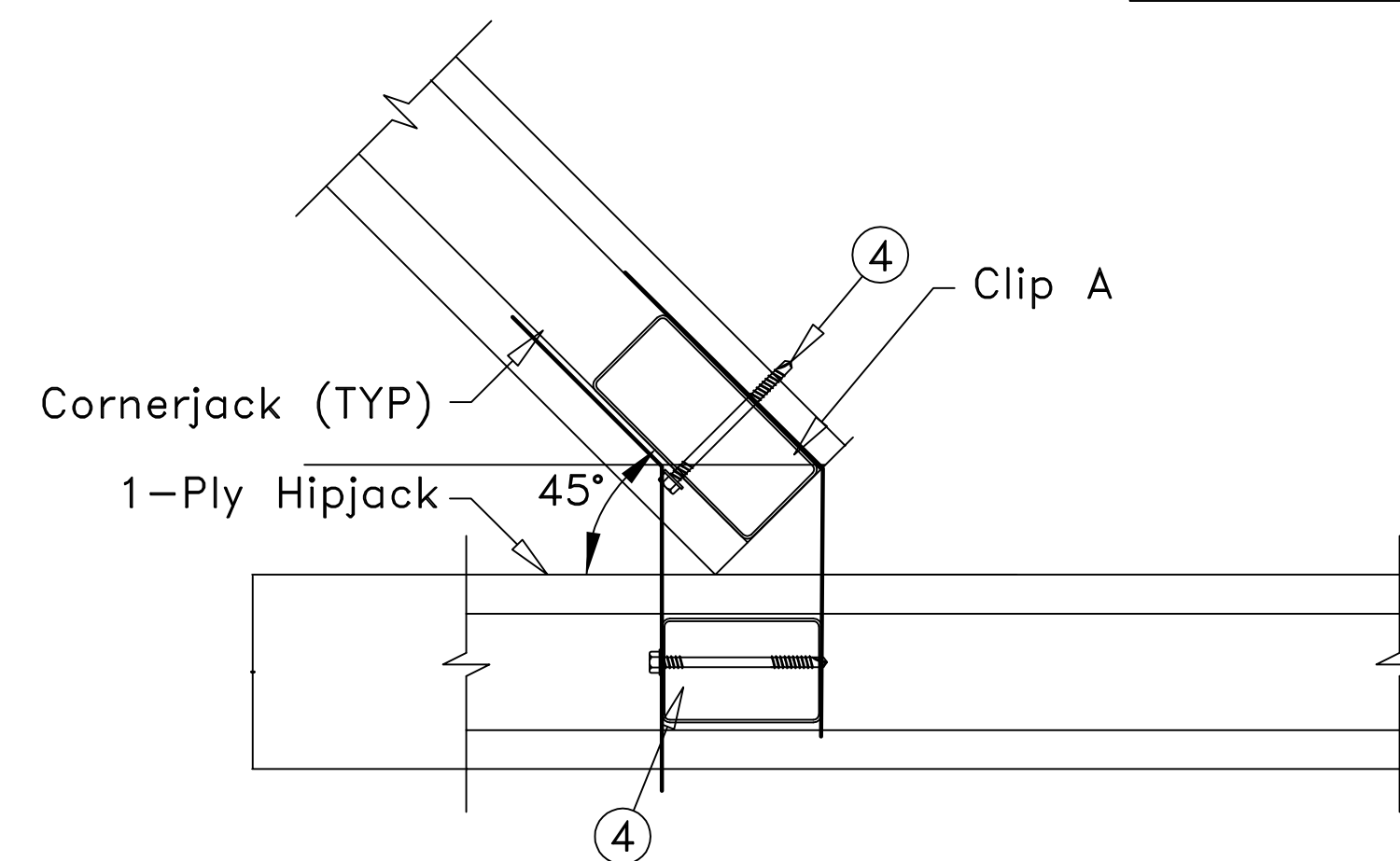
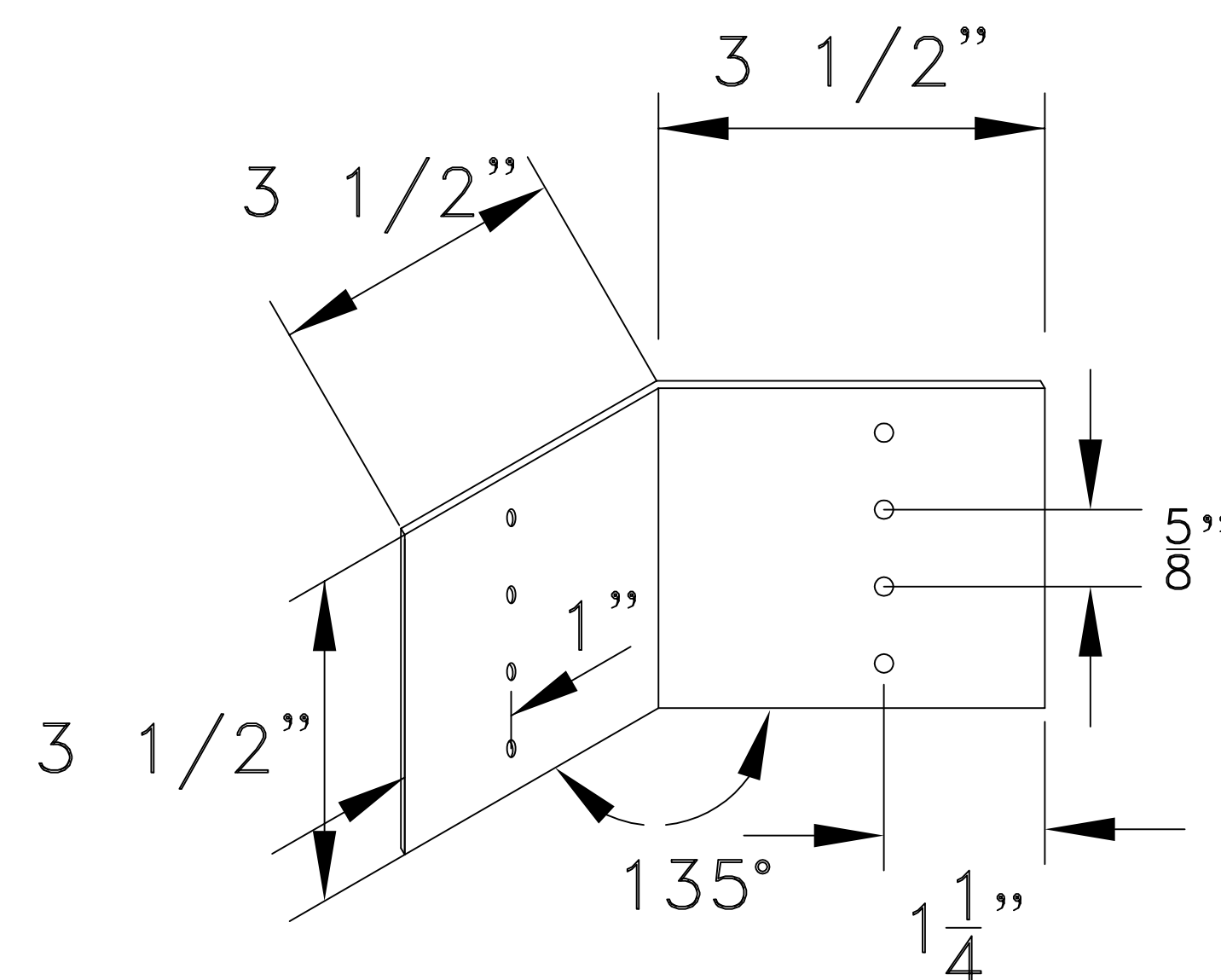


$$R_v = U = 2000\#$$



AMD SCREWS #14

45° 1-ply Hipjack Connection

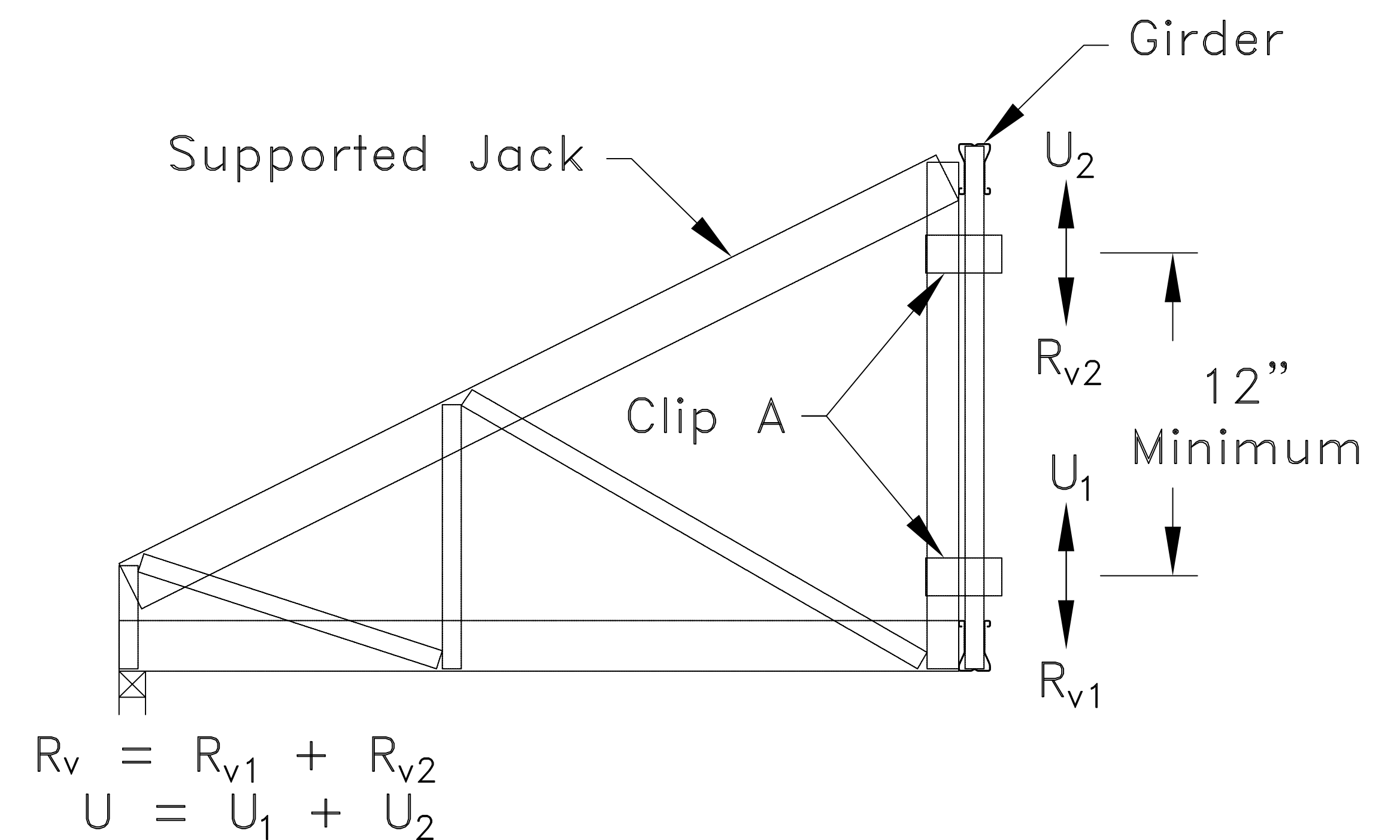


Clip A

Clip A

18g ASTM A653 Grade 33 G60

Minimum Bare Metal Thickness:  $t = 0.0428$ "



$$R_v = R_{v1} + R_{v2}$$

$$U = U_1 + U_2$$

Typical Jack To Girder Connection

General Notes:

- 1.The top and bottom chords of all trusses shall be properly connected to structural sheathing or purlins.
- 2.If supported truss or girder web is a Z-web, refer to TS068 for connection areas.
- 3.Screw end distance and edge distance is 9/32" minimum. Screw spacing is 9/16" minimum.
- 4.Circled numbers represent quantity of #14 self-drilling tapping AMD screws per clip.
- 5.Truss must be analyzed with concentrated loads directly in line with correctly placed girder vertical webs. TS025 and TS025A give correct web placement information.
- 6.If girder web is a C-Web, this detail should not be used.
7. Cold-Formed Steel Calculations are per the 2020 addendum to the "AISI 2016 North American Specifications for the Design of Cold-Formed Steel Structural Members." (S100-16/S2-20)

1-Ply Small-Small Hipjack  
Connection

**Custom Detail:**

CD141204 - SS - 1 Ply

**Date:**

11/05/24

