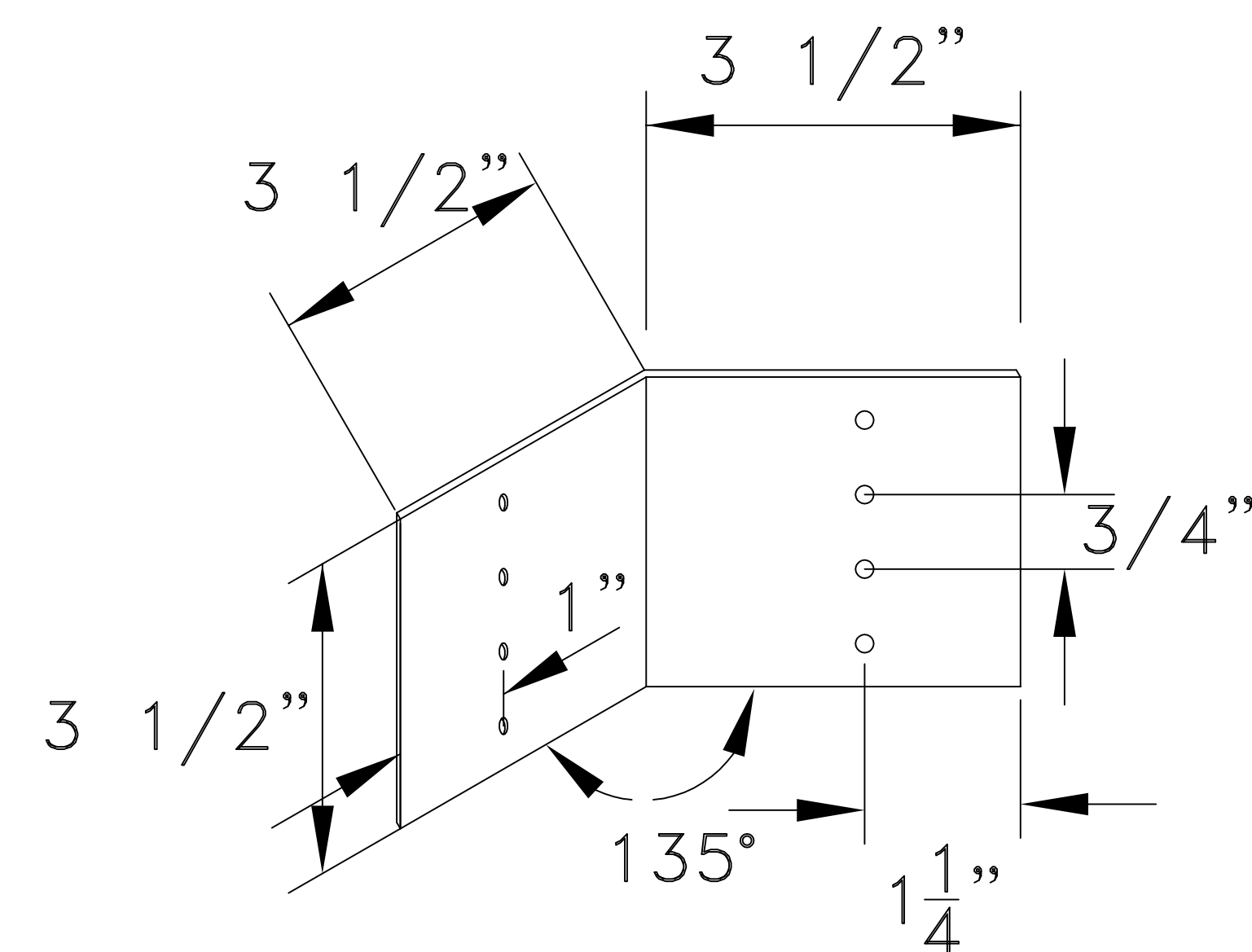


$$R_v = U = 2000\#$$

#14 AMD Fasteners

45° 1-ply Hipjack Connection

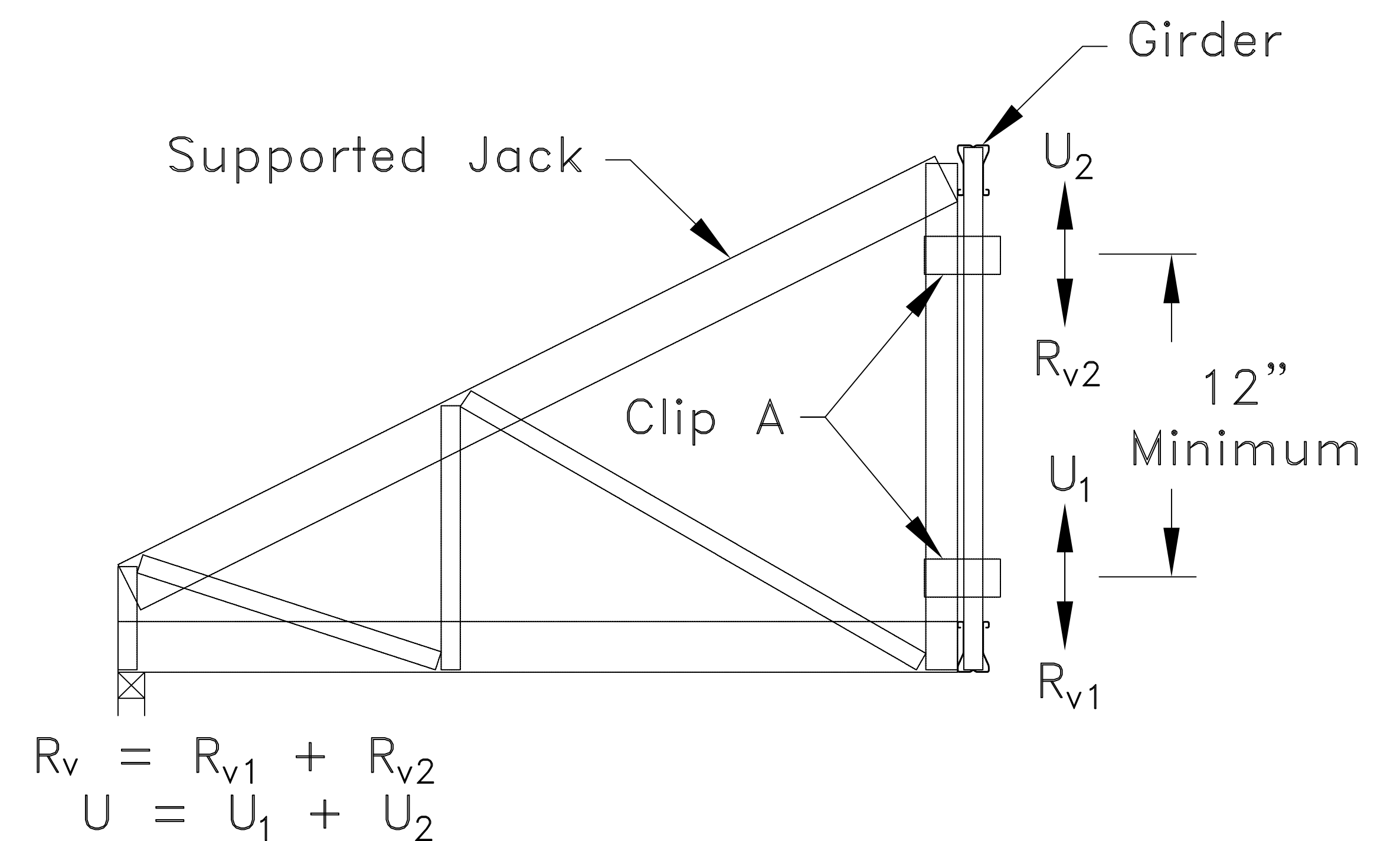


Clip A

Clip A

18g ASTM A653 Grade 33 G60

Minimum Bare Metal Thickness: $t = 0.0428$ "



Typical Jack To Girder Connection

General Notes:

- 1.The top and bottom chords of all trusses shall be properly connected to structural sheathing or purlins.
- 2.If supported truss or girder web is a Z-web, refer to TS068 for connection areas.
- 3.Screw end distance and edge distance is $9/32$ " minimum. Screw spacing is $3/4$ " minimum.
- 4.Circled numbers represent quantity of #14AMD self-drilling tapping Fasteners per clip
- 5.Truss must be analyzed with concentrated loads directly in line with correctly placed girder vertical webs. TS025 and TS025A give correct web placement information.
- 6.If girder web is a C-Web, this detail should not be used.
- 7.Cold-Formed Steel Calculations are per the 2020 addendum to the "AISI 2016 North American Specifications for the Design of Cold-Formed Steel Structural Members." (S100-16/S2-20)

1-Ply Large-Small Hipjack Connection

Custom Detail:

CD141204 - LS - 1 Ply

Date:

12/15/14

