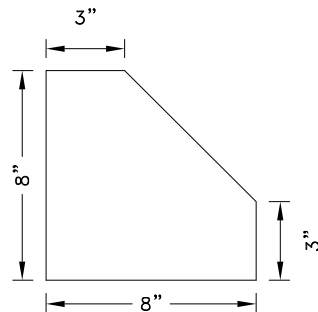
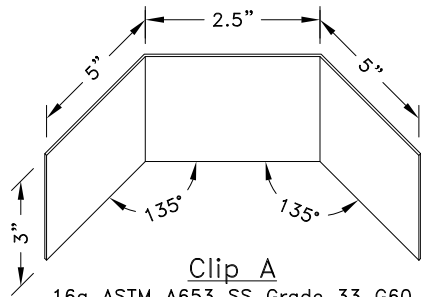
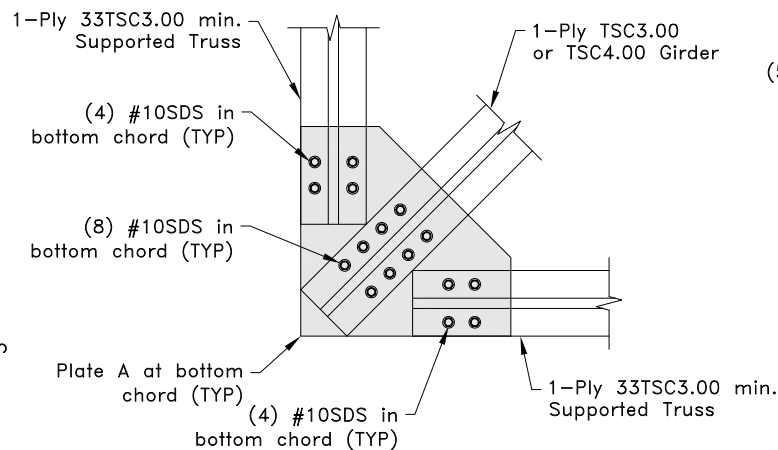


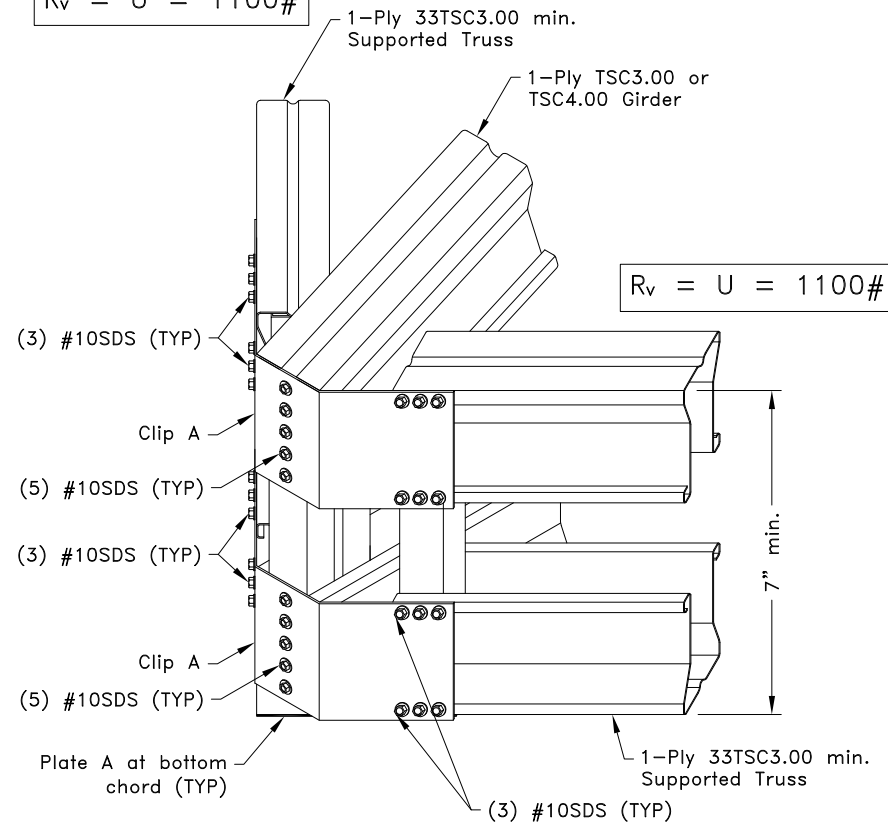
Chord-To-Web Connection



Bottom Chord Plate Connection



$$R_v = U = 1100\#$$



General Notes:

1. The top and bottom chords of all trusses shall be properly connected to structural sheathing or purlins, designed by others.
2. SDS = Self-Drilling Tapping Screw
3. Screw end distance and edge distance is 9/32" minimum. Screw spacing is 9/16" minimum.
4. Truss must be analyzed with concentrated loads directly in line with correctly placed girder vertical webs.
5. R_v refers to vertical reaction and U refers to uplift.
6. For clips connecting to a Z-web vertical refer to TS068 for connection area.
7. Cold-Formed Steel Calculations are per the 2010 addendum to the AISI 2007 "North American Specifications for the Design of Cold-Formed Steel Structural Members" (S100-07/S2-10).



www.TrusSteel.com

Florida: 2400 Lake Orange Drive, Suite 150 / Orlando, FL 32837 / (800) 755-6001
Missouri: 13723 Riverport Drive, Suite 200 / Maryland Heights, MO 63043 / (800) 326-4102

45° Fascia Truss-To-Truss Connection 1-Ply Girder

Alpine, a division of ITW Building Components Group, Inc. shall not be responsible for any performance failure in a connection due to a deviation from this detail. Any variation from this detail shall be approved in advance by Alpine, a division of ITW Building Components Group, Inc.

Custom Detail:

CD160605

Date:

07/11/16

Custom Detail Category:

Truss-To-Truss Connection