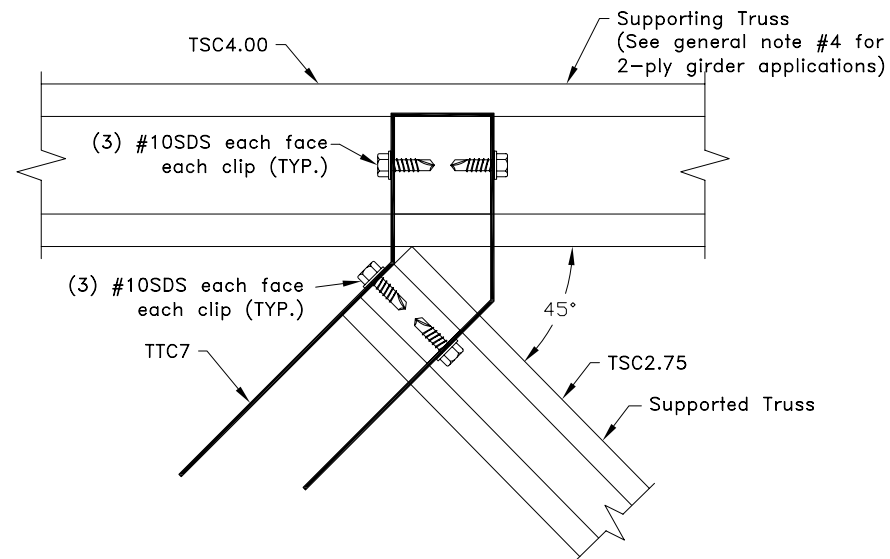


$$R_v = R_{v1} + R_{v2}$$

$$U = U_1 + U_2$$

$$R_v = U = 1200 \text{ lbs}$$



Section A-A

General Notes:

1. The top and bottom chords of all trusses shall be properly connected to structural sheathing or purlins.
2. SDS = Self-Drilling Tapping Screws.
3. #10SDS screw spacing, edge distance and end distance is 9/16" minimum.
4. This connection may be used when the girder is 2-ply. In this situation the closed edge of the TTC7 will wrap around the outer most ply of the girder and (3) #10SDS will be applied to each ply each face of the girder webs.
5. Cold-formed steel calculations are per the 2004 addendum to the 2001 AISI North American Specification for the Design of Cold-Formed Steel Structural Members.



www.TrusSteel.com

Florida: 1950 Marley Drive / Haines City, FL 33844 / (800) 755-6001
Missouri: 13389 Lakefront Drive / Earth City, MO 63045 / (800) 326-4102
California: 8351 Rovana Circle / Sacramento, CA 95828 / (800) 877-3678

45° Truss-to-Truss Connection using (2) TTC7 Clips

ITW Building Components Group, Inc. shall not be responsible for any performance failure in a connection due to a deviation from this detail. Any variation from this detail shall be approved in advance by ITW Building Components Group, Inc.

Custom Detail:

TS-CD-TT-4503-001

Date:

11/04/08

Custom Detail:

Truss-to-Truss Connection