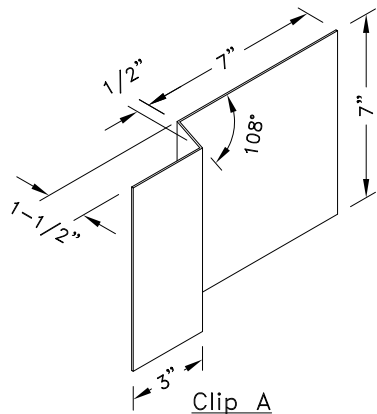
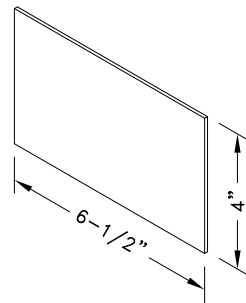


3-D View



Clip A

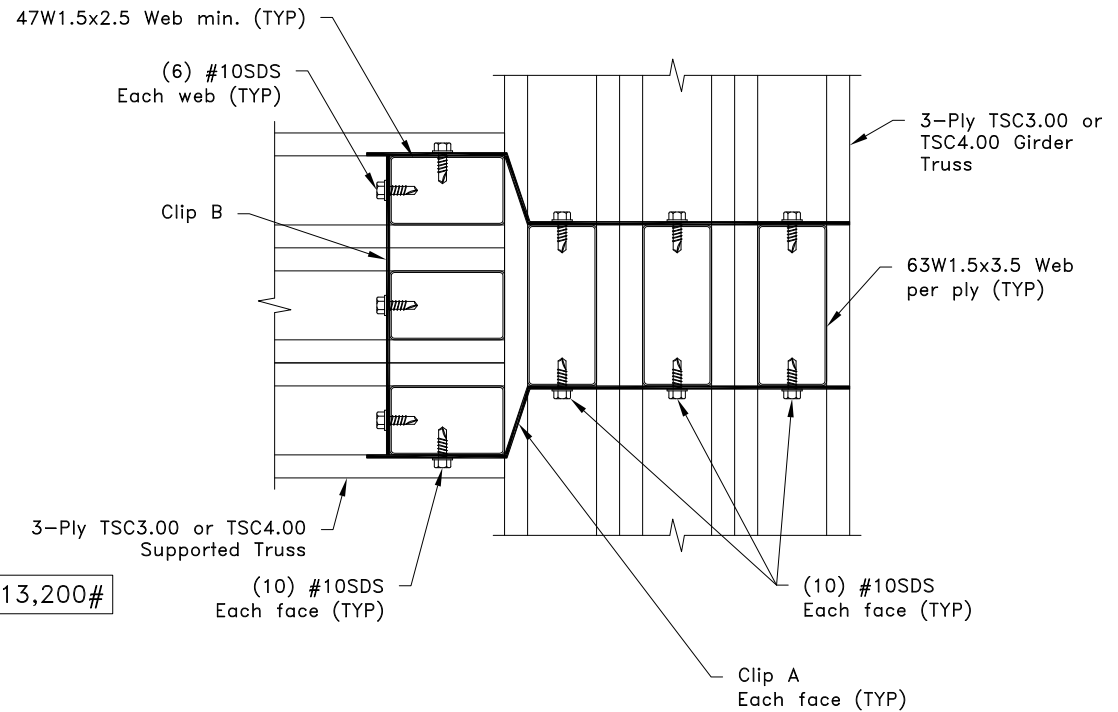
14g ASTM A653 SS Grade 33 Class 1 G60  
Minimum bare metal thickness:  $t = 0.0677$ "



Clip B

14g ASTM A653 SS Grade 33 Class 1 G60  
Minimum bare metal thickness:  $t = 0.0677$ "

$$R_v = U = 13,200\#$$



Plan View

#### General Notes:

1. The top and bottom chords of all trusses shall be properly connected to structural sheathing or purlins, designed by others.
2. SDS = self-drilling tapping screw
3. Screw end distance and edge distance is  $9/32$ " minimum. Screw spacing is  $9/16$ " minimum.
4.  $R_v$  refers to vertical reaction, and  $U$  refers to uplift.
5. Clip fastener placement is identical on opposite side to what is shown.
6. Cold-Formed Steel calculations are per the 2010 supplement to the AISI 2007 "North American Specification for the Design of Cold-Formed Steel Structural Members" (S100-07/S2-10).

**TrusSteel®**

www.TrusSteel.com

Florida: 2400 Lake Orange Drive, Suite 150 / Orlando, FL 32837 / (800) 755-6001  
Missouri: 13389 Lakefront Drive / Earth City, MO 63045 / (800) 326-4102

## 3-Ply Truss to 3-Ply Girder Connection

ITW Building Components Group, Inc. shall not be responsible for any performance failure in a connection due to a deviation from this detail. Any variation from this detail shall be approved in advance by ITW Building Components Group, Inc.

#### Custom Detail:

CD141002

#### Date:

10/02/14

#### Custom Detail Category:

Truss-to-Truss Connection