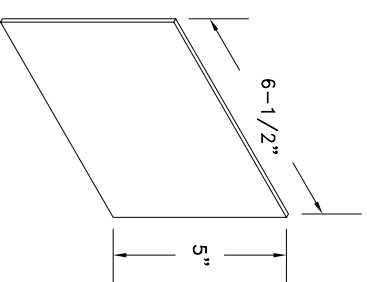
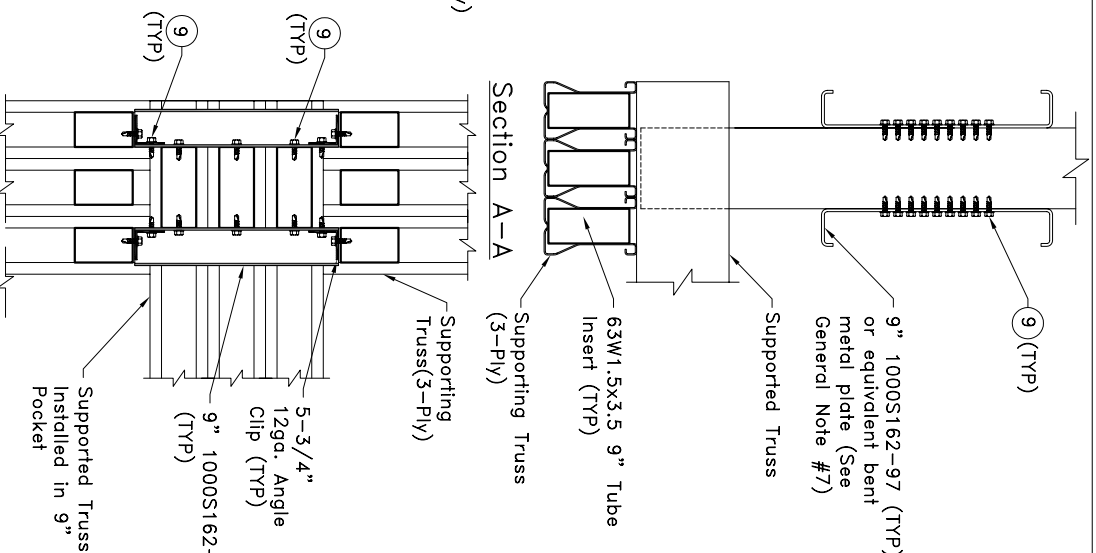
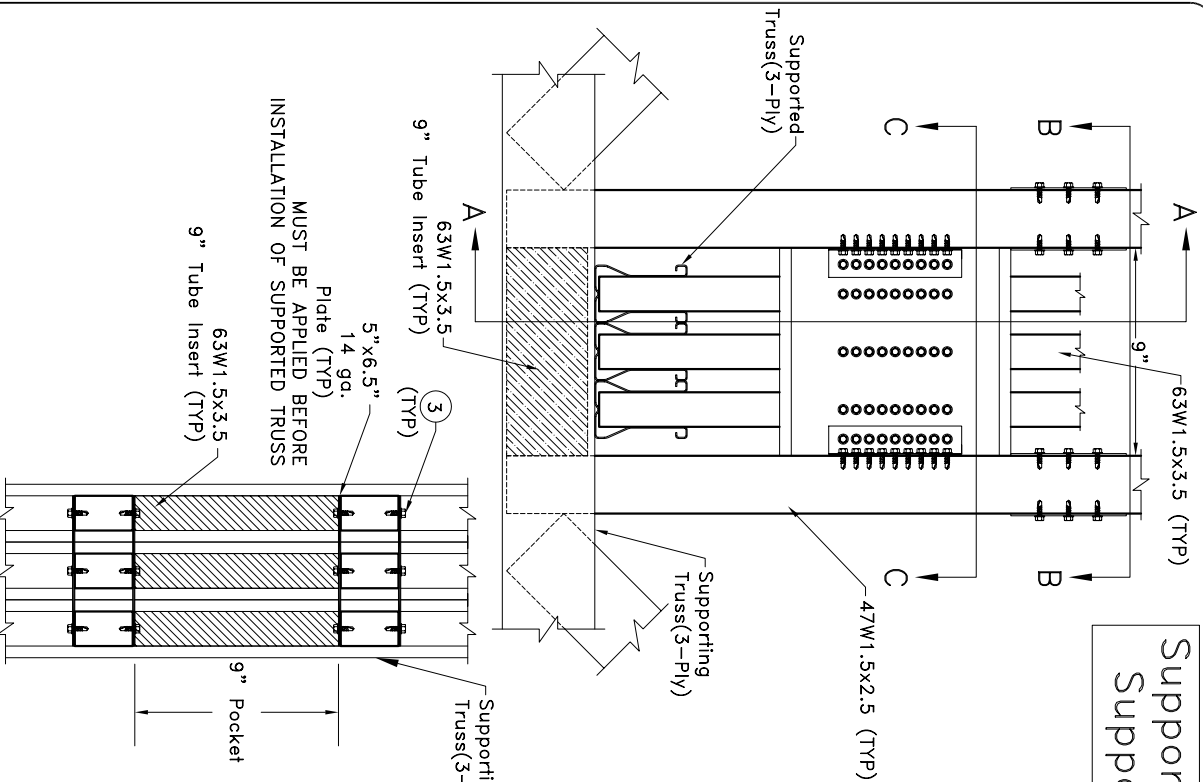
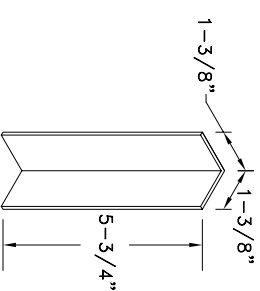


Supported Truss Reaction = 19000 lbs.
Supported Truss Uplift = 13100 lbs.



14g ASTM A653 SS Grade 33 Class 1 G60
Bare metal thickness = 0.0677"



12g ASTM A653 SS Grade 33 Class 1 G60
Bare metal thickness = 0.0966"

General Clip Information

General Notes:

1. All edge distances are 3/8" minimum.
2. All end distances & spacing are 9/16" minimum.
3. Circled numbers represent the quantity of #10 SDS (self-drilling tapping screws)
4. Supporting truss girder webs are 47W1.5x2.5 as shown.
5. Supported truss girder webs are 63W1.5x3.5 as shown.
6. 5"x6.5" 14ga. plates must be applied to supporting truss webs BEFORE supported truss is installed into pocket, as shown.
7. Equivalent bent metal plate to have a member depth of 10" and a flange width of 1-5/8" (stiffening lip is not required for bent metal plate) and to be of 12ga. ASTM A653 SS Grade 33 Class 1, G60 steel with a bare metal thickness of 0.0966". Refer to SSMA "Product Technical Information" catalog (7/01) for identification of member depth, flange width, and stiffening lip.
8. Calculations are per the 2004 addendum to the AISI 2001 North American Specification for the Design of Cold-Formed Steel Structural Members.

Section B-B View Before
Supported Truss Is Installed

Section C-C View After
Supported Truss Is Installed

90° Truss -to-Truss Pocket
Connection
19000 lbs Reaction

TrusSteel®
An ITW Company

www.TrusSteel.com

Florida: 1950 Marley Drive / Haines City, FL 33844 / (800) 755-6001
Missouri: 13389 Lakefront Drive / Earth City, MO 63045 / (800) 326-4102
California: 8351 Rovana Circle / Sacramento, CA 95828 / (800) 877-3678

ITW Building Components Group, Inc. shall not be responsible for any performance failure in a connection due to a deviation from this detail. Any variation from this detail shall be approved in advance by ITW Building Components Group, Inc.

Custom Detail:

TS-CD-TT-917-001

Date:

09/04/08

Custom Detail Category:

Truss-to-Truss Connection