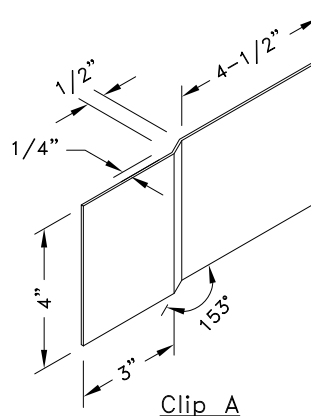
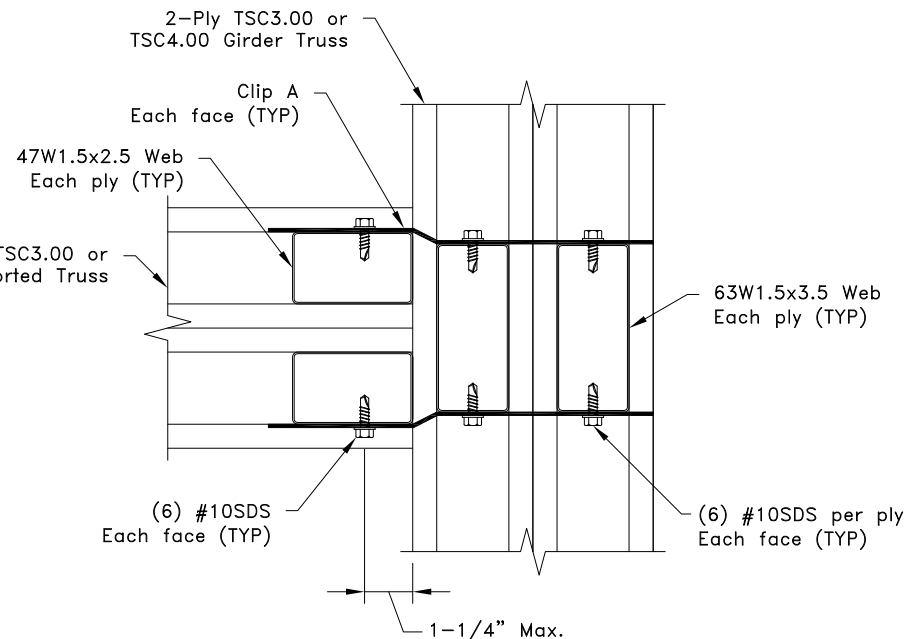


$R_v = R_{v1} + R_{v2}$ $U = U_1 + U_2$ $R_v = U = 8500\#$
--



14g ASTM A653 Grade 33 G60  
Bare metal thickness:  $t = 0.0677"$



Plan View

General Notes:

1. SDS = self-drilling tapping screw
2. Screw end distance and edge distance is  $9/32"$  minimum. Screw spacing is  $9/16"$  minimum.
3.  $R_v$  refers to vertical reaction, and  $U$  refers to uplift.
4. Clip fastener placement is identical on opposite side to what is shown.
5. Cold-Formed Steel calculations are per the 2010 supplement to the AISI 2007 "North American Specification for the Design of Cold-Formed Steel Structural Members" (S100-07/S2-10).

**TrusSteel®**

www.TrusSteel.com

Florida: 2400 Lake Orange Drive, Suite 150 / Orlando, FL 32837 / (800) 755-6001  
Missouri: 13389 Lakefront Drive / Earth City, MO 63045 / (800) 326-4102

## 90° Truss -to-Truss Connection

ITW Building Components Group, Inc. shall not be responsible for any performance failure in a connection due to a deviation from this detail. Any variation from this detail shall be approved in advance by ITW Building Components Group, Inc.

**Custom Detail:**

CD140108

**Date:**

01/29/14

**Custom Detail Category:**

Truss-to-Truss Connection