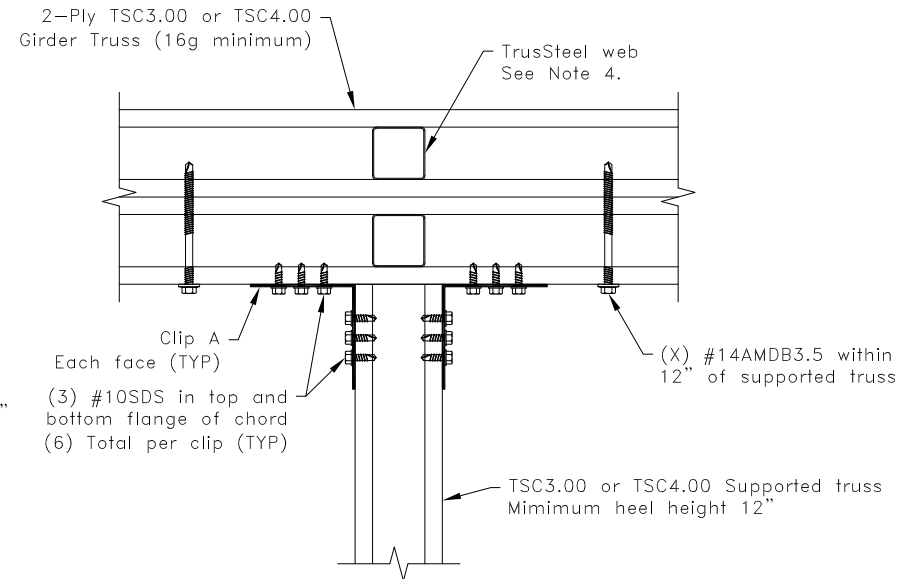


Clip A
16g ASTM A653 SS Grade 33 Class 1 G60
Bare metal thickness: $t = 0.0538$ "

$R_v = U = 1925\#$	
Girder Truss Chords	(X) = Number of required #14AMDB3.5 Fasteners
54TSC	3
68TSC	2
97TSC	2



General Notes:

1. SDS = self-drilling tapping screw
2. #10SDS screw edge and end distances are $9/32$ ", screw spacing is $9/16$ ".
3. #14AMDB3.5 fastener edge and end distances are $3/8$ ", fastener spacing is $3/4$ ". Fastener shall not be located at a panel point.
4. Girder must have web located within 6" of connection.
5. R_v refers to vertical reaction, and U refers to uplift.
6. The top and bottom chords of all trusses shall be properly connected to structural sheathing or purlins, designed by others.
7. Cold-Formed Steel Calculations are per the 2010 addendum to the AISI 2007 "North American Specification for the design of cold-Formed Steel Structural Members" (S100-07/S2-10).

TrusSteel[®]

www.TrusSteel.com

Florida: 2400 Lake Orange Drive, Suite 150 / Orlando, FL 32837 / (800) 755-6001
Missouri: 13389 Lakefront Drive / Earth City, MO 63045 / (800) 326-4102

90° Truss Chord to Chord Connection

ITW Building Components Group, Inc. shall not be responsible for any performance failure in a connection due to a deviation from this detail. Any variation from this detail shall be approved in advance by ITW Building Components Group, Inc.

Custom Detail:
CD130906

Date:
10/11/13

Custom Detail Category:
Truss-to-Truss Connection