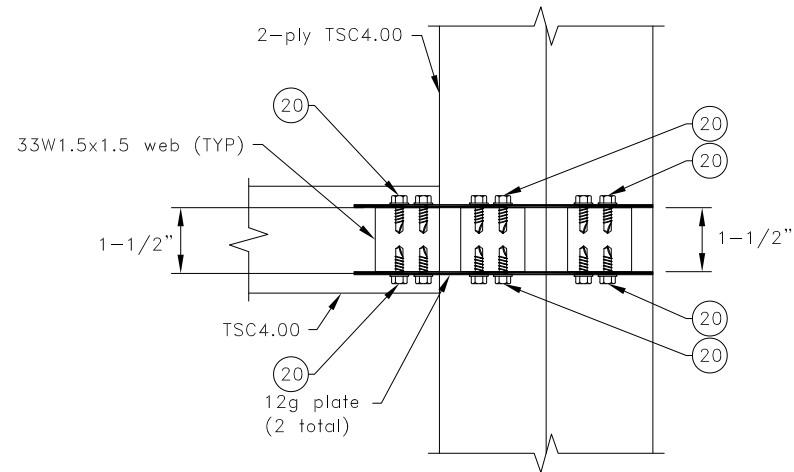
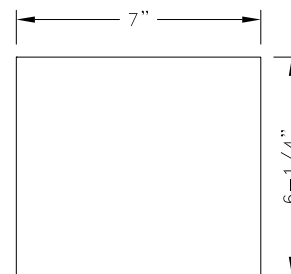


$$R = U = 4000\#$$



Cut Section View

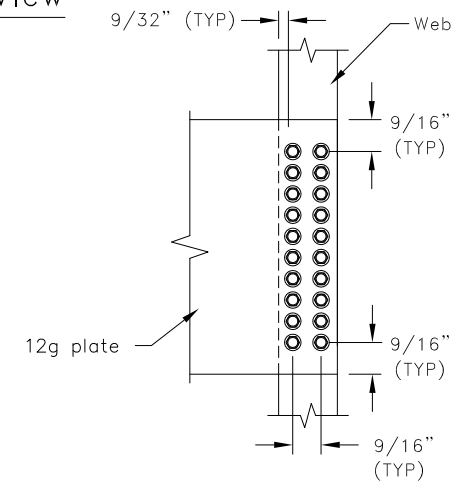


General Clip Information

12g ASTM A653 Grade 50 G60
Bare metal thickness: $t = 0.0966$ "

General Notes:

1. SDS = self-drilling tapping screw
2. Screw edge and end distances are 9/32", screw spacing is 9/16".
3. Circled numbers represent the quantity of #10SDS (self-drilling tapping screws).
4. Clip on opposite face is identical to what is shown.
5. Girder truss vertical web must be analyzed with properly placed applied loads from supported truss.
6. R refers to vertical reaction, and U refers to uplift.
7. The top and bottom chords of all trusses shall be properly connected to structural sheathing or purlins, designed by others.
8. Cold-Formed Steel Calculations are per the 2010 addendum to the AISI 2007 "North American Specification for the design of cold-Formed Steel Structural Members" (S100-07/S2-10).



Minimum Screw Spacing

TrusSteel®

www.TrusSteel.com

Florida: 2400 Lake Orange Drive, Suite 150 / Orlando, FL 32837 / (800) 755-6001
Missouri: 13389 Lakefront Drive / Earth City, MO 63045 / (800) 326-4102

90° Truss-to-Truss Connection 2-Ply 33W1.5x1.5 Girder Web

ITW Building Components Group, Inc. shall not be responsible for any performance failure in a connection due to a deviation from this detail. Any variation from this detail shall be approved in advance by ITW Building Components Group, Inc.

Custom Detail:

CD121202

Date:

12/05/12

Custom Detail Category:

Truss-to-Truss Connection