

3D View of TSHDC Clip Conn.

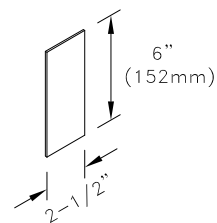
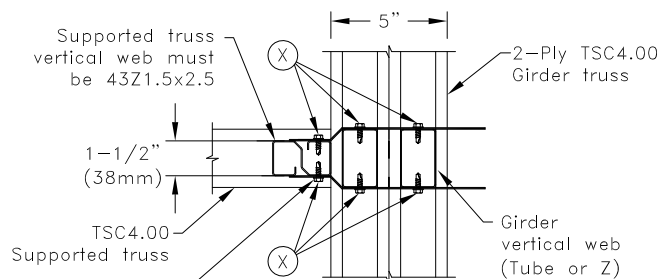
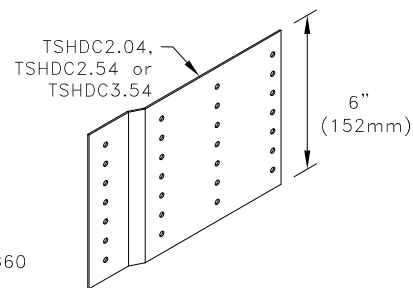


Plate A

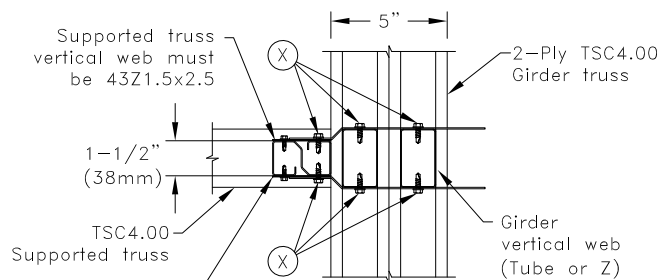
16g ASTM A653 SS Grade 33 Class 1 G60
Bare Metal Thickness: $t = 0.0538$ "



Section A-A

If using existing holes in TSHDC clip causes screws to not go through Z-Web, apply #10SDS into sides of TSHDC and through Z-Web so they are no closer than 9/32" from existing TSHDC holes.

If width of girder vertical web is:
2" (51mm) use clip TSHDC2.04
2-1/2" (64mm) use clip TSHDC2.54
3-1/2" (90mm) use clip TSHDC3.54



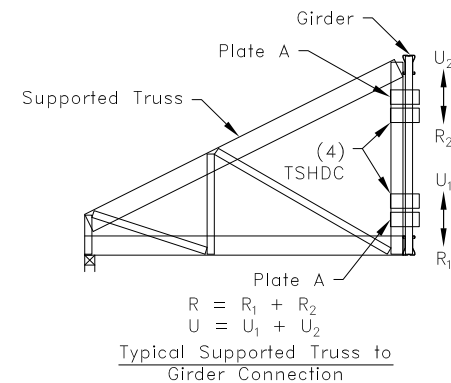
Section B-B

Plate A each face (TYP)
Attach Plate A to Z-Web with one set of screws in outside flange of Z-web then apply TSHDC clip over top of Plate A and attach both TSHDC and Plate A to inside flange of Z-Web together.

If width of girder vertical web is:
2" (51mm) use clip TSHDC2.04
2-1/2" (64mm) use clip TSHDC2.54
3-1/2" (90mm) use clip TSHDC3.54

Allowable Reaction and Uplift lbs (kN)	
X ^A	H = 60 in. (1524mm) minimum
	R = U lbs (kN)
5	6000 (26.69)
6	8000 (35.59)
7	9400 (41.81)

A. The quantity "X" refers to the number of #10SDS (Self-Drilling Tapping Screws) that are required on each side of each clip into the web member.



General Notes:

- The top and bottom chords of all trusses shall be properly connected to structural sheathing or purlins, designed by others.
- Screw spacing, edge distance and end distance is 9/16" (14mm) minimum.
- The supported truss must be designed utilizing a clip bearing type.
- R = Allowable Reaction and U = Allowable Uplift
- Cold-Formed Steel Calculations are per the 2010 supplement to the AISI 2007 "North American Specifications for the Design of Cold-Formed Steel Structural Members" (S100-07/S2-10).

TrusSteel[®]

www.TrusSteel.com

Florida: 1950 Marley Drive / Haines City, FL 33844 / (800) 755-6001
Missouri: 13389 Lakefront Drive / Earth City, MO 63045 / (800) 326-4102

Heavy TSC4.00 Truss-To-Truss Connection (2 Ply Girder) Z-Webs

ITW Building Components Group, Inc. shall not be responsible for any performance failure in a connection due to a deviation from this detail. Any variation from this detail shall be approved in advance by ITW Building Components Group, Inc.

Custom Detail:

CD120818

Date:

08/29/12

Custom Detail Category:

Truss-To-Truss Connection