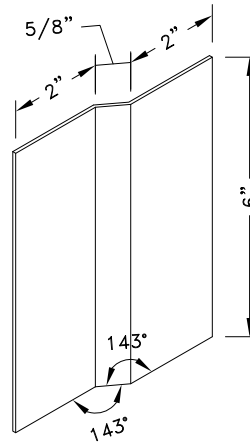
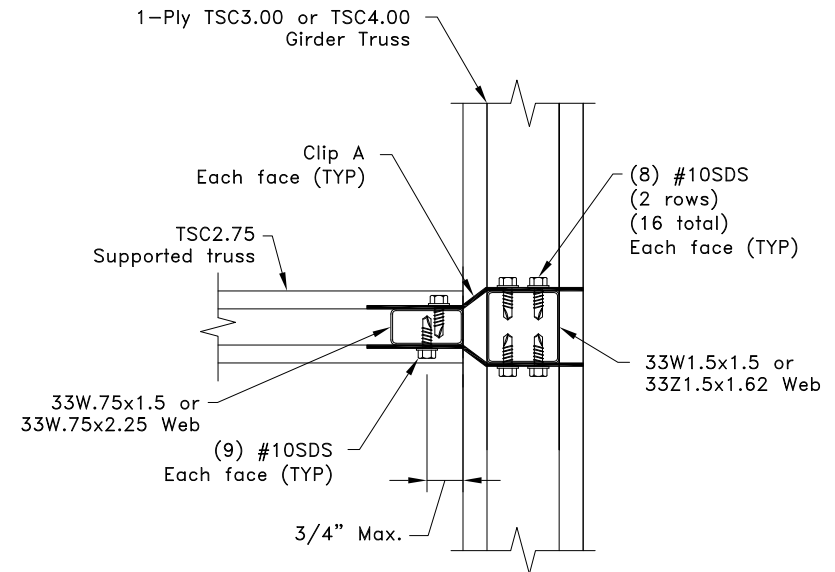


$$R_v = U = 3600\#$$



**Clip A**

12g ASTM A653 Grade 33 G60  
Bare metal thickness:  $t = 0.0966$ "



**Plan View**

**General Notes:**

1. SDS = self-drilling tapping screw
2. Screw end distance and edge distance is  $9/32$ " minimum.  
Screw spacing is  $9/16$ " minimum.
3. The top and bottom chords of all trusses shall be properly connected to structural sheathing or purlins, designed by others.
4.  $R_v$  refers to vertical reaction, and  $U$  refers to uplift.
5. Clip fastener placement is identical on opposite side to what is shown.
6. When supported truss has a Z-Web vertical refer to TS068 for connection areas.
7. Cold-Formed Steel calculations are per the 2010 supplement to the AISI 2007 "North American Specification for the Design of Cold-Formed Steel Structural Members" (S100-07/S2-10).



[www.TrusSteel.com](http://www.TrusSteel.com)

Florida: 2400 Lake Orange Drive, Suite 150 / Orlando, FL 32837 / (800) 755-6001  
Missouri: 13723 Riverport Drive, Suite 200 / Maryland Heights, MO 63043 / (800) 326-4102

## 90° Truss -to-Truss Connection

Alpine, a division of ITW Building Components Group, Inc. shall not be responsible for any performance failure in a connection due to a deviation from this detail. Any variation from this detail shall be approved in advance by Alpine, a division of ITW Building Components Group, Inc.

**Custom Detail:**

CD160704

**Date:**

07/12/16

**Custom Detail Category:**

Truss-to-Truss Connection