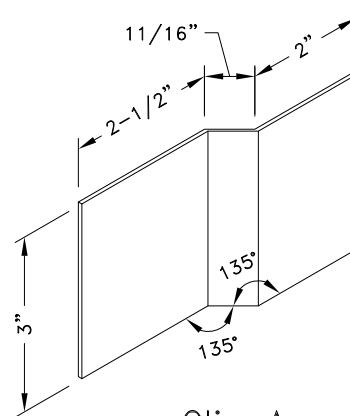


$$R_v = U = 1850\#$$

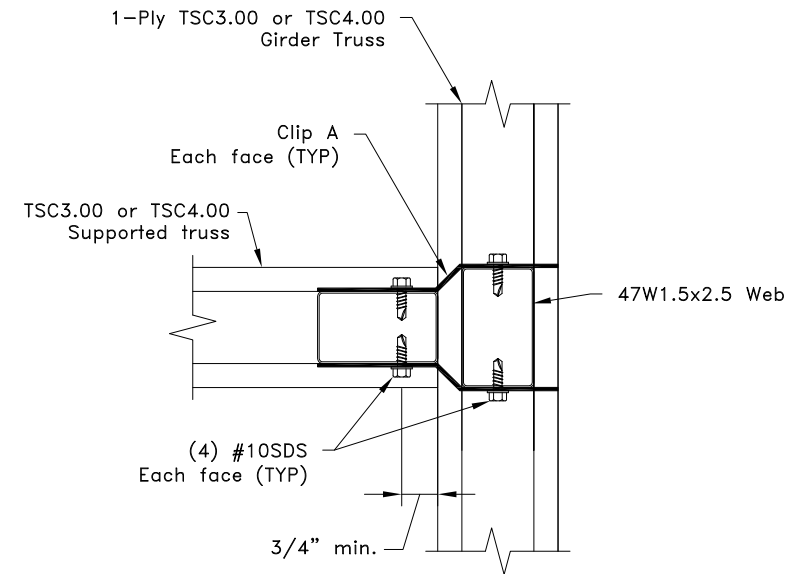


Clip A

16g ASTM A653 Grade 33 G60
Bare metal thickness: $t = 0.0538"$

General Notes:

1. The top and bottom chords of all trusses shall be properly connected to structural sheathing or purlins, designed by others.
2. SDS = self-drilling tapping screw
3. Screw end distance and edge distance is 9/32" minimum.
Screw spacing is 9/16" minimum.
4. R_v refers to vertical reaction, and U refers to uplift.
5. Clip fastener placement is identical on opposite side to what is shown.
6. When supported truss has a Z-Web vertical refer to TS068 for connection areas.
7. Cold-Formed Steel calculations are per the 2010 supplement to the AISI 2007 "North American Specification for the Design of Cold-Formed Steel Structural Members" (S100-07/S2-10).



Plan View



www.TrusSteel.com

Florida: 2400 Lake Orange Drive, Suite 150 / Orlando, FL 32837 / (800) 755-6001
Missouri: 13389 Lakefront Drive / Earth City, MO 63045 / (800) 326-4102

90° Truss-To-Truss Connection with 1 Clip Pair

ITW Building Components Group, Inc. shall not be responsible for any performance failure in a connection due to a deviation from this detail. Any variation from this detail shall be approved in advance by ITW Building Components Group, Inc.

Custom Detail:

CD141104

Date:

11/10/14

Custom Detail Category:

Truss-To-Truss Connection