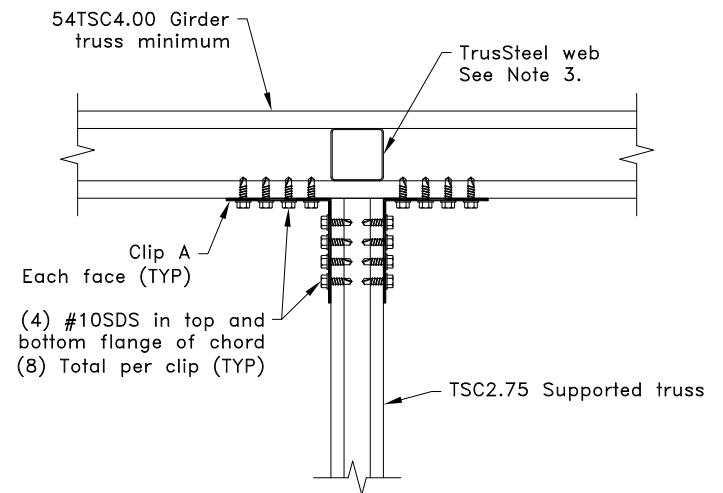


Clip A  
16g ASTM A653 SS Grade 33 Class 1 G60  
Bare metal thickness:  $t = 0.0538"$



#### General Notes:

1. SDS = self-drilling tapping screw
2. #10SDS screw edge and end distances are  $9/32"$ , screw spacing is  $9/16"$ .
3. Girder must have web located within 6" of connection.
4. R refers to vertical reaction, and U refers to uplift.
5. The top and bottom chords of all trusses shall be properly connected to structural sheathing or purlins, designed by others.
6. Cold-Formed Steel Calculations are per the 2010 addendum to the AISI 2007 "North American Specification for the design of cold-Formed Steel Structural Members" (S100-07/S2-10).

**TrusSteel®**

[www.TrusSteel.com](http://www.TrusSteel.com)

Florida: 2400 Lake Orange Drive, Suite 150 / Orlando, FL 32837 / (800) 755-6001  
Missouri: 13389 Lakefront Drive / Earth City, MO 63045 / (800) 326-4102

## 90° Truss Chord to Chord Connection

ITW Building Components Group, Inc. shall not be responsible for any performance failure in a connection due to a deviation from this detail. Any variation from this detail shall be approved in advance by ITW Building Components Group, Inc.

#### Custom Detail:

CD140601

#### Date:

06/05/14

#### Custom Detail Category:

Truss-to-Truss Connection