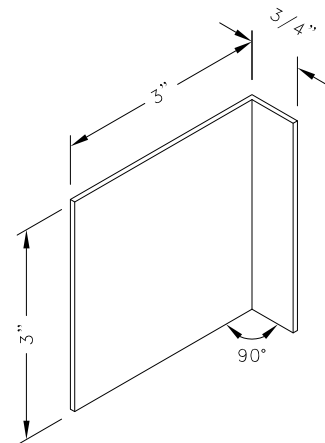
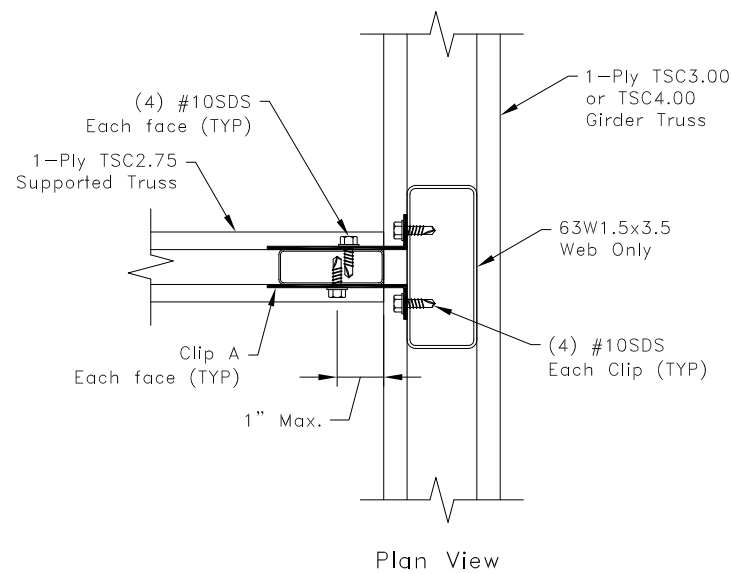


$U = U_1 + U_2$
$R_v = R_{v1} + R_{v2}$
$R_v = U = 200\#$
$R_h = 875\#$



Clip A
16g ASTM A653 Grade 33 G60
Bare metal thickness: $t = 0.0538"$



General Notes:

1. SDS = self-drilling tapping screw
2. Screw end distance and edge distance is $9/32"$ minimum.
Screw spacing is $9/16"$ minimum.
3. The top and bottom chords of all trusses shall be properly connected to structural sheathing or purlins, designed by others.
4. Truss must be analyzed with concentrated loads directly in line with correctly placed girder vertical webs.
5. R_v refers to vertical reaction, R_h refers to horizontal reaction and U refers to uplift.
6. Clip fastener placement is identical on opposite side to what is shown.
7. Cold-Formed Steel calculations are per the 2010 supplement to the AISI 2007 "North American Specification for the Design of Cold-Formed Steel Structural Members" (S100-07/S2-10).

TrusSteel®

www.TrusSteel.com

Florida: 2400 Lake Orange Drive, Suite 150 / Orlando, FL 32837 / (800) 755-6001
Missouri: 13389 Lakefront Drive / Earth City, MO 63045 / (800) 326-4102

90° Truss -to-Truss Connection

ITW Building Components Group, Inc. shall not be responsible for any performance failure in a connection due to a deviation from this detail. Any variation from this detail shall be approved in advance by ITW Building Components Group, Inc.

Custom Detail:

CD130504

Date:

05/08/13

Custom Detail Category:

Truss-to-Truss Connection