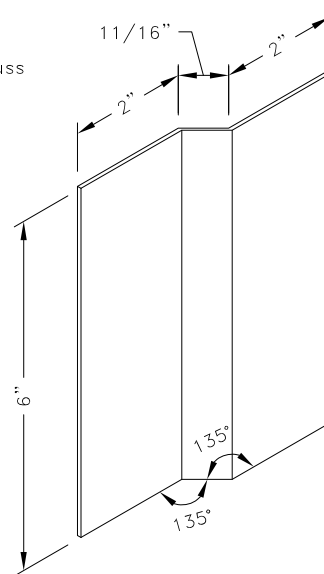
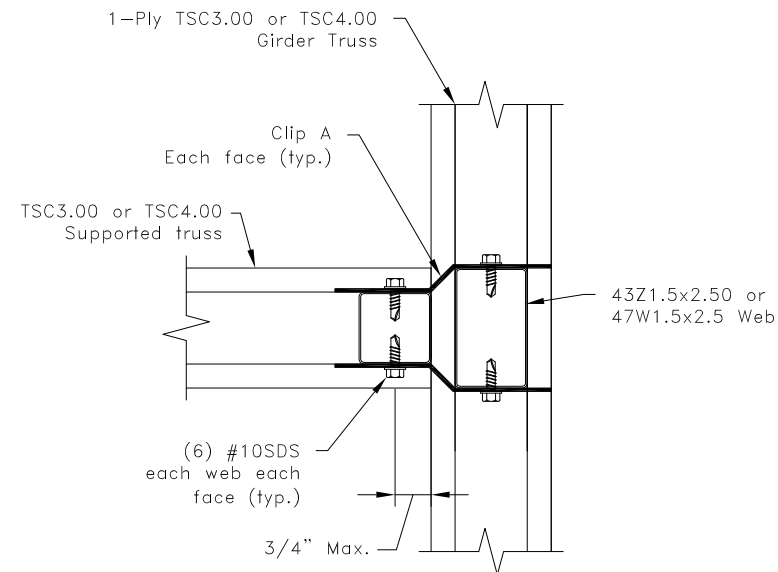


$$R_v = U = 2050\#$$



Clip A

16g ASTM A653 Grade 33 G60
Bare metal thickness: $t = 0.0538"$



Plan View

General Notes:

1. SDS = self-drilling tapping screw
2. Screw end distance and edge distance is 9/32" minimum. Screw spacing is 9/16" minimum.
3. R_v refers to vertical reaction, and U refers to uplift.
4. Clip fastener placement is identical on opposite side to what is shown.
5. When supported truss has a Z-Web vertical refer to TS068 for connection areas.
6. Cold-Formed Steel calculations are per the 2010 supplement to the AISI 2007 "North American Specification for the Design of Cold-Formed Steel Structural Members" (S100-07/S2-10).

TrusSteel®

www.TrusSteel.com

Florida: 2400 Lake Orange Drive, Suite 150 / Orlando, FL 32837 / (800) 755-6001
Missouri: 13389 Lakefront Drive / Earth City, MO 63045 / (800) 326-4102

90° Truss -to-Truss Connection

ITW Building Components Group, Inc. shall not be responsible for any performance failure in a connection due to a deviation from this detail. Any variation from this detail shall be approved in advance by ITW Building Components Group, Inc.

Custom Detail:

CD130403

Date:

04/10/13

Custom Detail Category:

Truss-to-Truss Connection