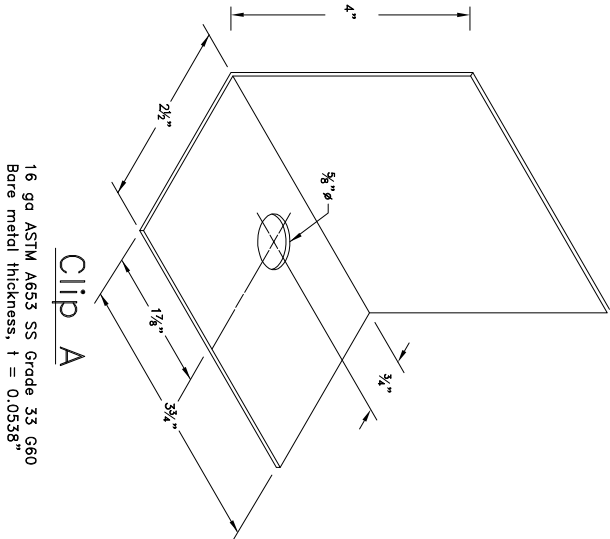


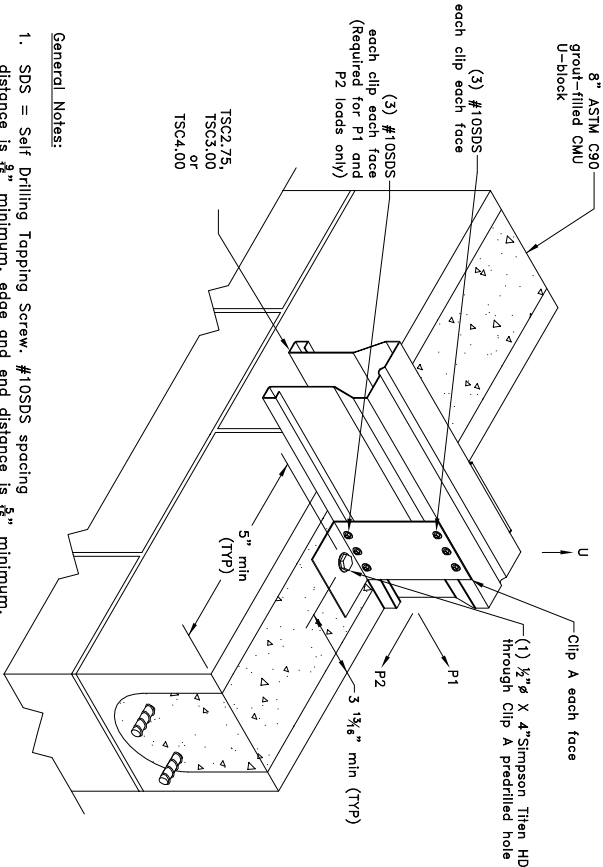
Allowable loads in Combination – lbs (kN) ^A		
Clip on One Face		
U	P1	
270 (1.2)	330 (1.46)	

A. Allowable loads shown on this detail are in combination.
 B. Design values are for uncracked or cracked masonry.



16 ga ASTM A653 SS Grade 33, G60
 Bare metal thickness, t = 0.0538"

Clip A



General Notes:

1. SDS = Self Drilling Tapping Screw, #10SDS spacing distance is 16" minimum, edge and end distance is 8" minimum.
2. Reference TrusSteel Standard Detail TS020 for top chord bearing requirements. All supports are to be solid bearing.
3. Attachment of second clip on opposite face of chord is identical to what is detailed.
4. For 2000 psi grout: Special inspection is required. For proper installation of Titen HD fasteners, grout requirements, and requirements of special inspection, refer to ESR-1056.
5. For 2500 psi grout: The term "grout" refers to normal weight concrete and structural sand-light weight concrete. Special inspection is required. For proper installation of Titen HD fasteners and requirements of special inspection, refer to ESR-2713.
6. Allowable loads given on this detail are maximum values, not in combination. If loads are in combination, contact a TrusSteel engineer.
7. It is the responsibility of the building designer to verify that the structural support members are designed for all applicable loads including (but not limited to) the loads given on this detail.
8. Cold-Formed Steel Calculations are per the 2010 addendum to the "AISI 2007 North American Specification for the Design of Cold-Formed Steel Structural Members." (S100-07/S2-10)

Truss Top Chord Bearing
 Uplift Attachment
 To CMU

Standard Detail:
 SD241201-TCB
 Date: 07/23/12