

Grouted CMU wall  
Design by others.  
Refer to General Note 4.

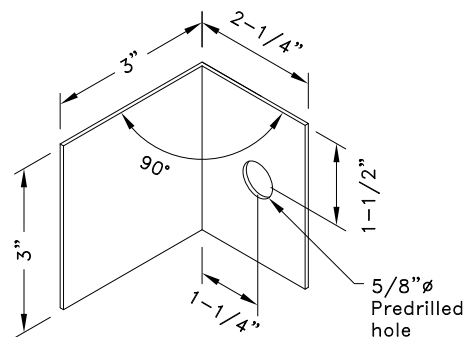
#### Allowable Load In Combination

$$R_v = U = 4000\#$$

$$R_h = 0\#$$

(1) 1/2"  $\phi$  x 4-1/2" Hilti Kwik  
HUS-EZ concrete masonry screw  
anchor through pre-drilled holes  
in Clip A, each face (TYP)

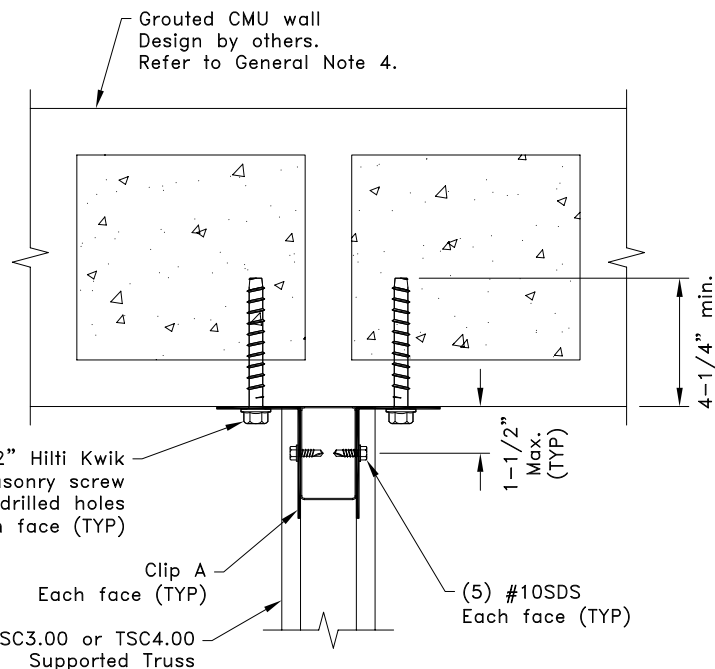
(1) 1/2"  $\phi$  x 4-1/2" Hilti Kwik  
HUS-EZ concrete masonry screw  
anchor through pre-drilled holes  
in Clip A, each face (TYP)



Clip A

12g ASTM A653 Grade 33

Minimum bare metal thickness:  $t = 0.0966"$



#### General Notes:

1. SDS = Self-Drilling Tapping screw
2. Screw end distance and edge distance is 9/32" minimum.  
Screw spacing is 9/16" minimum.
3. Minimum edge distance for Hilti Kwik HUS-EZ anchor is 8".  
Anchors must be installed a minimum of 1-1/4" inch from  
any vertical mortar joint.
4. Special inspection is required for proper installation of Hilti Kwik  
HUS-EZ anchors, CMU and grout requirements, and requirements  
of special inspection, refer to ICC ESR-3056 (October 1, 2013).
5.  $R_v$  refers to vertical reaction,  $R_h$  refers to horizontal reaction  
and  $U$  refers to uplift.
6. Cold-Formed Steel Calculations are per the 2010 addendum to  
the AISI 2007 "North American Specifications for the Design of  
Cold-Formed Steel Structural Members" (S100-07/S2-10).



www.TrusSteel.com

Florida: 2400 Lake Orange Drive, Suite 150 / Orlando, FL 32837 / (800) 755-6001  
Missouri: 13389 Lakefront Drive / Earth City, MO 63045 / (800) 326-4102

## 90° Truss to CMU Wall Connection (Flat wall)

Alpine, a division of ITW Building Components Group, Inc. shall not be responsible  
for any performance failure in a connection due to a deviation from this detail.  
Any variation from this detail shall be approved in advance by Alpine, a division of  
ITW Building Components Group, Inc.

#### Custom Detail:

CD150206

Date:

02/06/15

#### Custom Detail Category:

Truss-to-Bearing Connection